



Rise & Shine With Nutri-Serve!

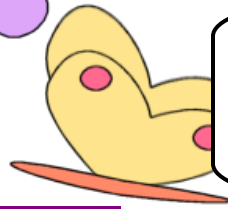
PRIMARY BREAKFAST MENU

We use the healthier whole grain versions of your breakfast favorites!

Breakfast Includes: Milk & Fruit
It is served from 0-0am!

Daily Alternates:
Cereal & Crackers
Crunch Mania
Berry Yogurt Parfait & Crackers

March Breakfast Menu Mullica School District



Did you know?!?
Eating within two hours of waking up jumpstarts your metabolism ~ the rate at which your body burns calories!



Breakfast Prices: *Menu subject to change
Regular Breakfast: \$1.25 Reduced: \$0.30 ~ Milk: \$0.60
Food Service Director: Anita Tirado ~ MTS@nsfm.com ~ Phone: 606-561-3868 ext 247
If you receive free or reduced lunch you are eligible for free and reduced breakfast!
Milk: Skim White, Chocolate, Strawberry, 1% White, Lactaid

Monday-March 6	Tuesday-March 7	Wednesday-March 8	Thursday-March 9	Friday-March 10
Pillsbury Mini Bagels Cinnamon Cream Cheese <u>Sides:</u> Fruit: Fresh/Cupped/Juice Milk Choice	Dutch Waffle w/ Syrup <u>Sides:</u> Fruit: Fresh/Cupped/Juice Milk Choice	Hot Ham & Cheese On a Biscuit <u>Sides:</u> Fruit: Fresh/Cupped/Juice Milk Choice	Mini Pancakes w/ Syrup <u>Sides:</u> Fruit: Fresh/Cupped/Juice Milk Choice	Cinnamon Roll Cinnamon Swirl <u>Sides:</u> Fruit: Fresh/Cupped/Juice Milk Choice
Monday-March 13	Tuesday-March 14	Wednesday-March 15	Thursday-March 16	Friday-March 17
Pillsbury Mini Bagels Cinnamon Cream Cheese <u>Sides:</u> Fruit: Fresh/Cupped/Juice Milk Choice	Dutch Waffle w/ Syrup <u>Sides:</u> Fruit: Fresh/Cupped/Juice Milk Choice	Hot Ham & Cheese On a Biscuit <u>Sides:</u> Fruit: Fresh/Cupped/Juice Milk Choice	Mini Pancakes w/ Syrup <u>Sides:</u> Fruit: Fresh/Cupped/Juice Milk Choice	SCHOOL CLOSED
Monday-March 20	Tuesday-March 21	Wednesday-March 22	Thursday-March 23	Friday-March 24
SCHOOL CLOSED	Dutch Waffle w/ Syrup <u>Sides:</u> Fruit: Fresh/Cupped/Juice Milk Choice	Sausage, Egg, Cheese On a Bagel <u>Sides:</u> Fruit: Fresh/Cupped/Juice Milk Choice	Mini Pancakes w/ Syrup <u>Sides:</u> Fruit: Fresh/Cupped/Juice Milk Choice	Chocolate Chip Muffin <u>Sides:</u> Fruit: Fresh/Cupped/Juice Milk Choice
Monday-March 27	Tuesday-March 28	Wednesday-March 29	Thursday-March 30	Friday-March 31
Pillsbury Mini Bagels Cinnamon Cream Cheese <u>Sides:</u> Fruit: Fresh/Cupped/Juice Milk Choice	Dutch Waffle w/ Syrup <u>Sides:</u> Fruit: Fresh/Cupped/Juice Milk Choice	Hot Ham & Cheese On a Biscuit <u>Sides:</u> Fruit: Fresh/Cupped/Juice Milk Choice	Mini Pancakes w/ Syrup <u>Sides:</u> Fruit: Fresh/Cupped/Juice Milk Choice	Cinnamon Roll Cinnamon Swirl <u>Sides:</u> Fruit: Fresh/Cupped/Juice Milk Choice

New Items!



Apple Bites



Choc. Chip Muffin



Mini Bagels



Crunch Mania



Cinnamon Roll

Breakfast Bites ~ Sold Separately

Fresh Fruit \$ 0.75 B-fast Bite 1 \$ 1.25 B-fast Bite 2 \$ 1.25

This institution is an equal opportunity provider.

